

Peoria Bio-Made

We are makers



HELLO!

Thank you for considering sites in the **Greater Peoria Region** for your biomedical manufacturing investment. The Greater Peoria Region's strengths are foundational to the growth of many notable companies like **Maui Jim Sunglasses** and **ATS** which are headquartered here; Caterpillar, whose global success was built on the community's values and workforce; and our newest neighbor, **Rivian**, the electric sport utility vehicle manufacturer recently featured in Forbes and Wired.

We are ready to add your company's name to that list of growing industry giants and ensure your biomedical manufacturing company's success long into the future. You will benefit from leveraging our central location, legacy of innovation and low energy and business costs.

GP is an ideal location for companies seeking

- A robust medical ecosystem with 30,000 people employed in healthcare - anchored by OSF, UnityPoint and the University of Illinois Center for Medicine in Peoria.
- Affordable energy rates - \$.0363/kWh average through Ameren Illinois vs the national average of \$.1009/kWh (2019).
- Proven research and technology capacity - U.S. Department of Agriculture Lab, Jump Simulation & AutonomouStuff.
- State partners pertinent to your interests - Illinois Biotechnology Industry Organization, the Illinois Science & Technology Coalition and the Illinois Technology Association.
- A Biomedical engineering hotspot with a higher talent concentration of employees than the national average - 58 employed in GP compared to the national average of 22 (EMSI Occupational Snapshot; June 28, 2021).

Thank you for your consideration. We look forward to hearing from you soon.

Sincerely,



Chris Setti | CEO



Lenora Fisher | Dir. Bus. Attraction



CONTENT INDEX

Location Attractiveness	3
GP at a Glance	4
Talent Alignment & Labor Availability	5
BioMed in GP	6
Workforce Pipeline	7
Bradley University Talent Pipeline	9
Talent Support Services	10
Business Support Services	14
Partnering Organizations	15
BioMedical Manufacturing Ecosystem	16
Highlighted University of Illinois Resources	19
Highlighted BioMedical Manufacturing Business in 5 County Region	21
GP Sites to Consider	23
Airport Access & Connectivity	24
Cost of Doing Business	25
Regional Quality of Life Comparison	26
Cultural Compatibility	27
Financial Incentives Overview	29
Appendix	32

Location Attractiveness

Peoria has been a longtime national leader in the country. Peoria is the oldest community in the state of Illinois and was the first European settlement in Illinois at Fort Creve Coeur. Before the arrival of European settlers, burial mounds and other artifacts prove civilization in the Illinois River Valley as far back as 10,000 BC. Native American Settlers named the valley Pimiteoui, or “fat lake”—recognizing the region’s plentiful resources.

During the Industrial Revolution, Peoria’s steamboat and railroad connections created a vast amount of wealth and Peoria was soon the nation’s fourth-largest railroad hub. At peak whiskey production, the Peoria tax collection district supplied nearly half of the federal government’s entire revenue. The tax on distilled spirits accounted for 95% of this amount.

In the midst of all this, the region also became known for the phrase, “If It Plays in Peoria,” made popular by the comedian Groucho Marx. It was believed that if an act did well in Peoria, it would do well nationwide because Peoria was considered a tough audience and also the population of Peoria was fairly representative of the country. According to **Peoria Magazines**, “Pampers’ disposable diapers, McDonald’s’ McRib sandwich and New Coke were all marketed in Peoria before being sold across the nation. (“The Phrase that Put Peoria on the Map”).” Peoria is and has always been a test market for a host of ideas and it is a great community for innovators and thinkers who are vetting concepts that they want to take to the world.



Today, Peoria remains a place where people can seek and find the life they want. If you are interested in an urban feel, we have the Warehouse District with loft spaces, walkability, restaurants, bars and distilleries. If you are interested in a more rural setting, our smaller communities can offer that with a mere 20 minute commute to a host of different employment opportunities. Plus there is everything in between - historic neighborhoods and recently constructed subdivisions.

The Peoria region offers the cultural amenities of cities much larger in size. Highlighted assets include a world class symphony, a multi-disciplinary Smithsonian affiliated museum, multiple ballet companies, art galleries and artist studios, the oldest and largest park district in Illinois, and award-winning fine dining restaurants.

Many diverse cultures also call Peoria home and its international airport provides easy access to the entire world.

Below are some links to a recent **Peoria Progress** publication for additional research and information.

- [Community](#)
- [Shopping & Dining](#)
- [Arts & Entertainment](#)
- [Sports](#)
- [Recreation](#)

Peoria Magazines

A local publication for information about the community and source for the insights above. Locally run and published for years, the magazine does a great job sharing the community’s story and calling attention to the assets of the community.

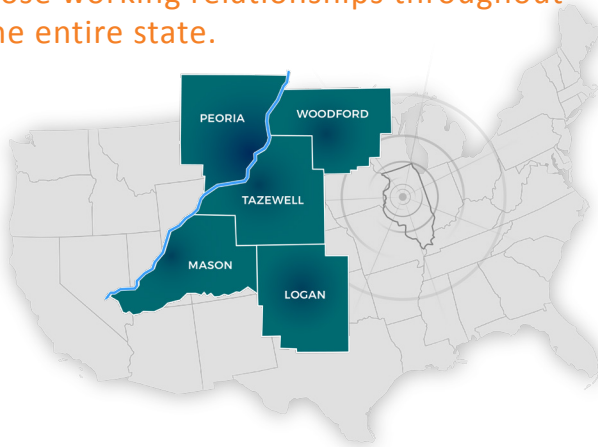
Discover Peoria

Another great resource for activities is Discover Peoria, the region’s Convention and Visitors Bureau. By encouraging residents to be tourists in their own backyards, they keep tabs on activities for tourists and residents alike. You’ll find art shows, festivals, recreational options and more. It’s a great resource for getting the vibe of the area and how your workforce can plug in.

GREATER PEORIA

AT A GLANCE

5 Counties in the heart of Illinois, with close working relationships throughout the entire state.

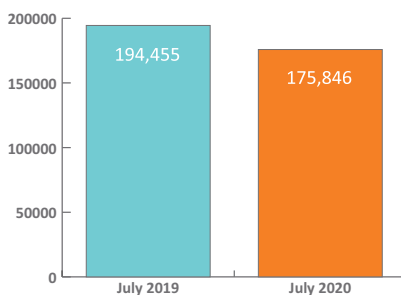


POPULATION

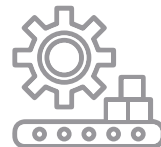


\$26 MILLION
GDP

LABOR FORCE



Major Industry Strengths



Metal Manufacturing



Healthcare



Agriculture



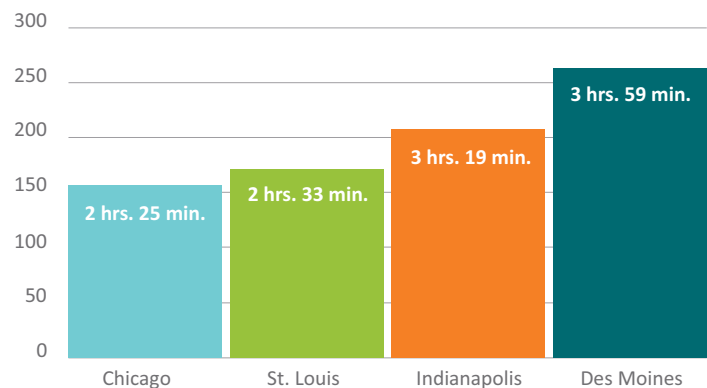
Logistics & Transportation

Transportation Assets

- Illinois River with year round barge access
- 11 Railroads, 5 Class 1
- 3 Interstate Highways
- Foreign Trade Zone 114
- Inland port with full time customs agent
- International Airport with 12 direct flight destinations, 5 of them being major hubs

Easy Access to the Following Major Markets

Major Market Markets



Talent Alignment & Labor Availability

WHERE TO ACCESS FUTURE TALENT

Undergraduate Pipelines in and around Greater Peoria



TOP 10 ILLINOIS SCHOOLS

1. University of Chicago
2. University of Illinois at Urbana-Champaign
3. Northwestern University
4. University of Illinois at Chicago
5. DePaul University
6. Loyola University Chicago
7. Northern Illinois University
8. Illinois Institute of Technology
9. Southern Illinois University Carbondale
10. Illinois State University

Community College & Technical Institutes

- Illinois Central College
- Spoon River College
- Heartland Community College
- Midstate Technical Institute
- OSF St. Francis Medical Center College

Baccalaureate & Graduate Degree-Awarding Institutions

- Bradley University
- Eureka College
- Methodist College
- University of Illinois School of Medicine
- University of Illinois School of Nursing
- Illinois State University
- Illinois Wesleyan
- University of Illinois
- Southern Illinois University
- Western Illinois University

Additional Online Credentialing Opportunities Available



Live, Work, Play, Learn & Connect
Here; Peoria is for everyone."

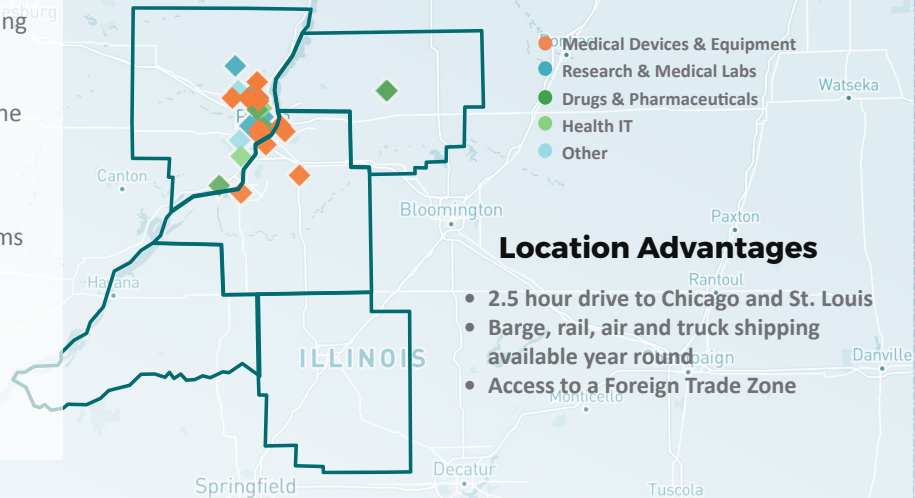
BioMed in Greater Peoria

The Next Innovation: Biotechnology

Greater Peoria has long been known for its manufacturing prowess. From its early days as the “Whiskey Capital of the World”, to its vital role in the mass production of penicillin during WWII, to the growth of Caterpillar as the world-leader in earth movers, Greater Peoria continues evolving, but remains true to its spirit: **We are makers.**

Supported by our manufacturing and medical ecosystems and a community of supportive resources, Greater Peoria is strongly positioned to become a biomedical manufacturing leader in the Midwest.

Join us as we build the next innovation.



Location Advantages

- 2.5 hour drive to Chicago and St. Louis
- Barge, rail, air and truck shipping available year round
- Access to a Foreign Trade Zone



250+ PhD researchers working at institutions in the region



11 Colleges with relevant programs in Illinois including Bradley University, University of Illinois College of Medicine of Peoria & Eureka College



10 Dry and wet lab spaces for entrepreneurs



3 Industry leaders: Charles Rivers Labs, Lonza, & Cook Medical



2 Major hospital systems: UnityPoint Health & OSF HealthCare



2 Local contractors with lab space experience: O'Shea Builders and River City Construction

GP is home to one of the largest USDA Agricultural Research Centers in the country.

During WWII, the Ag Lab was responsible for perfecting the process which made the mass-production of penicillin possible. Today, the lab continues its groundbreaking work solving difficult challenges in agriculture, biotechnology and public health.



PEORIA BIO-MADE

Peoria Bio-Made is a non-profit founded by Jake Becraft of **Strand Therapeutics**. Together with stakeholders in the Peoria area, they are working to realize the Peoria Bio-Made initiative and how it is positioning Peoria, IL to be the next BioMedical Manufacturing hub of the United States.

Visit www.peoriabio-made.org for more.

Companies in our BioMed Ecosystem



Workforce Pipeline

Peoria MSA: Total Certificates and Degrees by Higher Ed Institution, AYs 2015-2019

of Certifications & Bachelor's Degrees Awarded in the Region

Grand Total		
Institution Name	Sum of Total All Certs below the baccalaureate	Sum of Total All Degrees
Bradley University	0	6922
Eureka College	0	757
Graham Hospital School of Nursing	81	0
Illinois Central College	2952	5792
Methodist College	68	729
Midwest Technical Institute-East Peoria	2096	0
Saint Francis Medical Center College of Nursing	0	1180
Spoon River College	1228	1054
Grand Total	6425	16434
Source: Integrated Postsecondary Data System; Completions		



Workforce Pipeline

Sum of Grand Total Courses of Study Offered in the Region	
CipTitle	Grand Total Completions between 2015 - 2019
Engineering, General	408
Biomedical/Medical Engineering	478
Chemical Engineering	918
Materials Engineering	717
Mechanical Engineering	2780
Environmental Control Technologies/Technicians	113
Industrial Production Technologies/Technicians	1160
Quality Control and Safety Technologies/Technicians	37
Mechanical Engineering Related Technologies/Technicians	510
Engineering-Related Fields	533
Engineering Technologies/Technicians, Other	7
Biology, General	1764
Biochemistry, Biophysics and Molecular Biology	404
Botany/Plant Biology	115
Cell/Cellular Biology and Anatomical Sciences	1980
Microbiological Sciences and Immunology	126
Physiology, Pathology and Related Sciences	126
Pharmacology and Toxicology	15
Biomathematics, Bioinformatics, and Computational Biology	26
Biotechnology	30
Ecology, Evolution, Systematics, and Population Biology	31
Neurosciences	46
Biological and Biomedical Sciences, Other	774
Mathematics	1647
Applied Mathematics	369
Statistics	1120
Biological and Physical Sciences	54
Systems Science and Theory	279
Gerontology	40
Nutrition Sciences	202
Chemistry	1523
Physics	869
Electrical/Electronics Maintenance and Repair Technology	15
Health Services/Allied Health/Health Sciences, General	312
Health and Medical Administrative Services	1282
Allied Health and Medical Assisting Services	1129
Allied Health Diagnostic, Intervention, and Treatment Professions	1221
Clinical/Medical Laboratory Science/Research and Allied Professions	321
Health/Medical Preparatory Programs	1
Medicine	337
Management Information Systems and Services	463
Total Grads 2015-2019 24,282	

Chart of the courses of study offered by the primary academic institutions in a **90 mile radius**. These numbers show the number of completions between years 2015-2019.

This data is reflective of completions from the following schools near GP

- Bradley
- Eureka
- Graham Hospital School of Nursing
- Illinois Central College
- Illinois State University
- Methodist College
- Midwest Technical Institute
- St. Francis School of Nursing
- Southern Illinois University of Carbondale
- University of Illinois, Champaign
- Western Illinois University

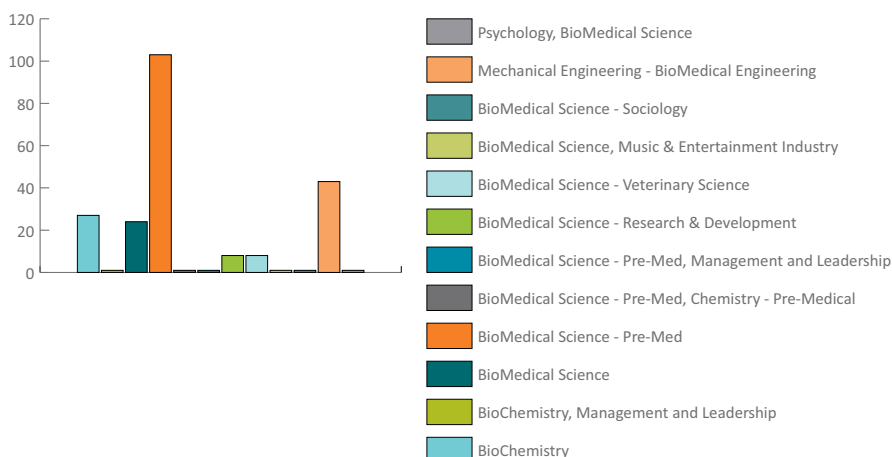


24,282
 Grads
 in Fields
 Pertaining
 to BioTech
 between
 2015-2019

Bradley University Talent Pipeline

Below you will find enrollment numbers for Bradley's Fall 2020 semester. There were a total of 221 students which represents about 4% of the undergraduate population.

BRADLEY UNIVERSITY FALL 2020 BIOMEDICAL ENROLLMENT



The following links show Bradley's related majors and concentrations:

- [BioMedical Science](#)
- [Medical Technology](#)
- [Cell & Molecular Biology](#)
- [BioMedical Engineering](#)

Highlighted faculty pertaining to your effort:

- [Craig Cady—Associate Professor](#)
Ph.D., Research: Neuroendocrine regulation of proton & chloride transporters, University of Arizona
- [Kelly McConaughay—Interim Dean & Professor](#)
Ph.D., Organismic and Evolutionary Biology, Harvard University
- [Melinda Faulkner—Associate Professor](#)
Ph.D., Microbiology and Molecular Genetics, Harvard Medical School

Bradley University is a medium-sized, private, comprehensive university that is nationally recognized as a leader in engaged learning for students. They have a long tradition of providing hands-on, scientific and engineering education with a strong foundation in the liberal arts. STEM graduates have practical experience in their chosen fields as well as a core education that emphasizes critical and creative thinking, effective communication, integrative learning, practical application, and social awareness.

Bradley currently offers both bachelor's degrees and master's degrees in biology, biomedical science, environmental science, biochemistry, chemistry, and mechanical engineering with a biomedical concentration. The University is committed to developing degree programs and non-degree programs for returning students.

Bradley faculty work collaboratively on research with both undergraduate and graduate students in diverse areas such as: biomedical engineering, microbiology, cell and molecular biology, computational biology, biochemistry, bioanalytical chemistry, and biomanufacturing. Students have the opportunity to practice instrumentation and techniques including: HPLC, GC, GC-MS, NMR, GPC, gel electrophoresis, time of flight mass spectrometry, qPCR, fluorescence microscopy.

In Fall 2020, Bradley University had 603 undergraduate students majoring in the Departments of Biology, Chemistry and Biochemistry, and Mechanical Engineering. This represented approximately 13% of all Bradley undergraduates. Undergraduate students fill vital roles in faculty research programs, which makes them uniquely qualified for research positions as they graduate with their bachelor's degrees. The three departments also enrolled 19 graduate students and 39 students in related minor programs (biology, chemistry, sustainability). On average (2016-2020), the three departments collectively awarded 121 bachelor's degrees and 43 master's degrees per year.

Talent Support Services

The Emerging Workforce: K-12
and college students in their
“cradle to career” journey

“

Investing in tomorrow’s workforce
strengthens our students and your
company’s future.”

- GP Works



Career Spark

CareerSpark is an interactive, multi-industry career expo open to all 8th grade students in our regions. Through hands-on exhibits, this event sparks students’ interest in 16 national career pathways available in Greater Peoria. The expo, led largely by regional employers, showcases different career fields in GP’s top industry clusters, including manufacturing, healthcare, logistics, agribusiness, IT, and more. Each year, Career Spark introduces thousands of regional Jr. High students to your company and the jobs they could have with you. It will help inform their choices and efforts into high school and college, providing a long term workforce pipeline for your company’s sustainability.

The CareerSpark After Hours (“You’re Hired” Event) helps high school students find jobs and internships/apprenticeships/workforce-based learning experiences. This is a networking and job fair event following CareerSpark.

Toolkits for Educators

This collection of resources is specifically designed to help educators align their Middle/High School Curricula with State Standards for Career Preparation. This toolkit includes Regional Support in Developing Internship Programs for Students and Employers, and the GP Works Portal for students to find internships/apprenticeships with local employers.

Skills USA Illinois

This program provides a roadmap for employers and schools to develop apprenticeships for students and provides funding and tax write-offs for employers who do hire student apprentices (subsidizes the cost of their labor).

[Registered Apprenticeship Program](#)

[FAQ Document](#)

GP boasts a broad base of [Mentoring Organizations](#) and programs that support youth professional and personal development.

College and Career Readiness Programs allow students to graduate from high school with work-ready credentials, on-the-job experience, and even associate’s degrees from local community colleges.



Talent Support **Services**

Regional Opportunities for Earning a Postsecondary Credential

Career Readiness



Illinois Central College Apprenticeship Programs

Earn and Learn Programs/Paid Apprenticeships

Programs ranging from a few weeks to a few years that provide job-ready credentials for careers in manufacturing, healthcare, transportation and energy, technology, and workforce readiness.

- Manufacturing: Industrial Maintenance, CNC Machine Operating, Welding
- Healthcare: Gateway to Medical Lab Tech Program
- Transportation and Energy: Highway Construction, Solar Pipeline Training, Truck Driving
- Internet Technology: Secure Software Development, LAN Technician Certificate, CompTIAA+
- Workforce Readiness



Greater Peoria Essential Abilities and Knowledge (GPEAK)

GPEAK is a regional partnership between Illinois Central College, the CEO Council's Regional Workforce Development Alliance, the Greater Peoria Economic Development Council, Illinois Community College Board, JFF, and EdSystems. These groups translated the state's 10 essential employability competencies into a practical system to prepare individuals for meaningful and fulfilling careers.

These employability competencies include:

- Teamwork & Conflict Resolution
- Adaptability & Flexibility
- Cultural Competence
- Communication
- Problem Solving
- Decision Making
- Critical Thinking
- Initiative & Self Drive
- Reliability & Accountability
- Planning & Organizing



A quality education is one that not only expands the mind and teaches critical thinking, but is also one that prepares a student for his/her future."

- Dr. Sheila Quirk Bailey, President, ICC

The GPEAK system is a free and open online platform available to students, education systems, community-based agencies, and employers in the region that provides certification to individuals who have demonstrated mastery of an essential workforce skill. - <https://edsystemsniu.org/gpeak/> - <https://icc.edu/gpeak/>

Talent Support Services



Illinois Joblink

This is a database for employers and job seekers in the state of Illinois. Employers can search the resumes of available employees in the region and find a ready workforce available and motivated to work. This resource combined with the talent development programs described previously create an environment for tailor making the workforce you need.



Goodwill Industries of Central Illinois is a non-profit organization with 11 stores, 5 donation centers, a logistics center and an online auction site. The local goodwill also operates an employment service center and a veterans' home to help people find jobs, assists our veterans with job services and resource referral, and match young people with mentors. To learn more about the services they provide, visit - <https://www.goodwillpeo.org/careers/>



CareerLink provides

- **Apprenticeship Assistance**—Apprenticeship assistance provides financial resources to employers of apprentices. Individuals must meet WIOA eligibility criteria. This federally funded service helps defray the costs of the apprentice's classroom training costs; provides supportive services to the apprentice during training; and reimburses employers a percentage of the apprentice's on-the-job training wages.
- **Incumbent Worker Training**—Incumbent Worker Training (IWT) assistance helps local employers develop and implement training programs for your existing employees to increase productivity and boost the company's competitiveness. To be eligible for an IWT training grant, your company must need to train existing workers in order to avert potential layoffs or increase your workers' skill levels. If eligible, your company can be reimbursed 100% of the cost of the skills training.
- **On-the-Job Training**—On-the-Job Training (OJT) assistance has been designed as a way of helping businesses manage the cost of training new employees. Through OJT, employers may be reimbursed 50 to 75% of an eligible new hire's wages during a customized training period. The duration of the OJT assistance is determined by the requirements of the job and the skills of the individual. Individuals must meet WIOA eligibility criteria. Wage requirements may apply.



Making Dreams a Reality; Not just a job but a career."

– Laura, Tazewell County

Talent Support Services



CEO Council Workforce Development Alliance

This working group formed in response to regional employer workforce needs. As workforce is the number one driver of growth, this group works to stabilize and grow our economy by systemically connecting employers, educators, community based organizations with high school graduates, the under-credentialed and multi-barriered adults to ensure 60% of our population has the required certifications to obtain gainful employment.

Emerging Workforce Pathway—Addresses Middle School/Career Exploration, High School Career Experiences/College Credits, Career Decisions, Post secondary credentials (Community College/Trade School, Apprenticeships, Regional 4 year Colleges/Universities focused on retaining the recently credentialed in the Peoria region.

Working Adult Up-Skill Pathway—Targets underemployed and under-credentialed adults with work experience to obtain credentials that address workforce gaps. Earn and Learn—short term to under 3 years.

Multiple Barrier—Focuses on adults who swirl through Community based Organizations and support systems with little to no credentials or work experience to qualify for entry level job stabilization.

Employment Organizations

Tri-County Peoria Urban League, The Workforce Network, Express Employment Professionals, Advantage Staffing, Kelly Services, StaffQuick, Adecco Staffing, Resource Management Services, Weststaff, Sedona Staffing Services, Staffing Difference, Diversified Personnel Associates, Illinois Employment and Training Center, Snelling Personnel Services, Trillium, Medical Staffing Partners, Firststaff, MidState Staffing, Manpower, Labor Ready, Experience Works, Mathews Progress Group, Department of Employment Security, STL Cloud Voice Staffing.

Greater Peoria

Business Support Services



Import/Export Support—Export support in the region is supported by the GPEDC and Bradley's Small Business Development Center. With International Trade Representatives on staff, Bradley supports businesses with their export goals.



Incentive Support—The GPEDC has extensive experience securing incentives for local businesses. From Foreign Trade Zone, to Enterprise Zone, to Opportunity Zone, to other state incentives like the EDGE program or Community Development Block Grant Program, the GPEDC is the place to start.



Innovation/Startup Support—The GPEDC also manages programs and support services for innovators and entrepreneurs alongside the Small Business Development Center at Bradley. Existing programs include the Nest CoWorking space, One Million Cups, Programming for Distillery Labs, and one on one business coaching.

Investors in your Success—In addition to the business supporting programs above, the **GPEDC Board of Directors & CEO Council** also facilitate a network of business leaders invested in the success of businesses in the region. Think of them as you network of support and look forward to the powerful growth you will enjoy in GP.



Relocation Support—The GPEDC, Peoria Association of Realtors, and the Peoria Area Chamber of Commerce and the Peoria Convention & Visitors bureau work together to introduce new businesses to key stakeholders in the community and connect them to opportunities in Central Illinois.



Site Selection Support—The GPEDC supports business location decisions through property and community research, publishing information pertaining to site selection on the Data Hub, and connecting businesses to local resources that will support their success here. We will do everything in our power to ease your transition to the community and understand the opportunities available to you in Central Illinois.



Tech Commercialization Support—GPEDC & **Bradley PTAC** Office. The GPEDC and Bradley collaborate to support businesses with tech commercialization services. The PTAC center helps businesses pursue and perform contracts with the Department of Defense, other federal agencies, state and local governments and with government prime contractors. PTAC also supports businesses with their SAM registration, identification of contract opportunities, help understanding requirements and in preparing and submitting bids & patent pursuits.



Workforce Development Support—The GPEDC & the Regional Workforce Alliance work with local primary and secondary schools to align training and resources to business needs.

Greater Peoria

Partnering Organizations



Discover Peoria—is the region’s convention and visitor’s bureau and advertises the region for conferences and national concert performers as well as for tourists from near and afar. They are a great resource for the incredible recreational destinations and activities in the area.



Distillery Labs—is the region’s innovation, technology and startup hub. Launched by a \$10 million dollar grant from the state of Illinois, Distillery Labs is 1 of 15 members of the Illinois Innovation Network. Each network member has primary areas of focus and Greater Peoria’s focus is agtech, health and wellness, and smart mobility. Distillery Labs will provide a co-working space, entrepreneurial programming, a prototyping lab, a test kitchen, and multiple other services to entrepreneurs and innovators in the Greater Peoria region.



The Downtown Development Corporation— exists to encourage and support development in Downtown Peoria and for developers. Within the downtown district, they can assist with learning about the community, finding development opportunities, identifying incentives, connecting businesses with resources and professional services and serve as a liaison with local government agencies.



The Peoria Next Innovation Center—offers state of the art wet and dry lab space at a discounted rate to startup entrepreneurs in the biomedical field. It will be a key partner in the success of existing and startup biomedical companies in the region.



Peoria Area Chamber of Commerce—The Peoria Area Chamber of Commerce is a key partner in the region’s economic success. Through their leadership development courses, young professionals network, advocacy and main street business support, they are a key resource for business success in the region.



USDA Agricultural Research Lab—Greater Peoria is home to one of the largest USDA Agricultural Research Centers in the country. During WWII, the Agriculture Lab was responsible for perfecting the process which made the mass-production of penicillin possible. Today, the lab continues its groundbreaking work solving difficult challenges in agriculture, biotechnology and public health.

BioMedical

Manufacturing Ecosystem



The Peoria NEXT Innovation Center



10 Wet Labs

Life Science Focus, Liquid Analysis & Experimentation, Additional Features and Controlled Environment.



10 Dry Labs

Calculation Research, Lab Equipment, Computer-Assisted Experiments and Cost-Effective & Accessible.



48,000 Square Feet

Designed to meet the needs of expanding businesses and has three levels.



27 Companies

The building can house up to 27 companies.

Bradley University is the home to 10 wet labs and 10 dry labs for researchers, inventors, and entrepreneurs that are transforming new technologies and innovations into commercial enterprises. The Innovation Center leverages the strengths of Caterpillar Inc., the USDA Agriculture Laboratory, Bradley University and other health-science and technology organizations throughout the region to mature start up companies to commercial successes. Companies in the fields of medical devices, mechanical engineering, molecular studies, biofuels and information technology are current tenants in the Innovation Center.

The EDC works closely with Bradley and can introduce you to anyone of interest to your work.



BioMedical

Manufacturing Ecosystem



Jump Simulation and Education Center

Jump, located on OSF's campus is one of the world's largest medical simulation centers. They are merging the most innovative minds with the most innovative technology. At Jump Sim, they provide witness to the different processes of health care. They discern through research how these processes can be improved and they act to change those processes through innovative thinking for the benefit of the people they serve.

It has an on-site engineering lab that serves as both a development and testing facility for emerging tech.

New Jump Research Labs have also recently been deployed within Jump to focus efforts, areas of focus include: biomedical visualization, data analytics, biomedical engineering, and others. (None are public facing site at this time).

Jump also offers biomedical related engineering fellowship.

Jump | SIMULATION

Jump ARCHES

Peoria is home to one of the nation's largest foundations that is solely committed to funding research, prototyping, and deployment of biomedical engineering projects.

Jump Applied Research through Community Health through Engineering and Simulation (ARCHES) is a partnership between Jump Simulation and Education Center at OSF HealthCare and HCESC in The Grainger College of Engineering at the University of Illinois. It was established in 2014 by a \$62.5 million gift to provide direct access and competitive grants to engineers and physicians working together to combat problems in the realm of healthcare. In 2019, the partnership was expanded with a new commitment of \$50 million. Proposal requests are accepted twice annually. Jump ARCHES also offers an annual summer internship at HCESC for UIUC students (from the website).

This foundation is core to innovation and research in the local biomedical engineering field. It brings students to University of Illinois, focuses their attention in biomedical development and empowers practicing clinicians to invest time in groundbreaking fields. Read more [here](#).

Jump Sim programs and objectives are key to improving the safety, effectiveness and efficiency of care for community members across the region."

BioMedical

Manufacturing Ecosystem



1 of 6

Illinois doctors recieved their MD or resident training at UICOM.



950 plus

licensed hospital beds within six blocks of campus.



2 million

patient population from urban and rural areas served by two large, affiliated hospital systems.

University of Illinois College of Medicine in Peoria

The Cancer Biology and Pharmacology (CBP) team is the primary basic and translational research department on campus.

Faculty conduct research on cancer biology, neuroscience, and ion channel biology that is at the interface of cancer biology and neuroscience. In addition to research, equally central to the Department's mission is its direct contribution to medical education, and research training of medical fellows and postdoctoral research scientists.

Here is the list of their faculty and their expertise:

<https://peoria.medicine.uic.edu/departments/cbp/faculty/>

We would gladly make introductions to any and all persons of interest to your work.



THE UNIVERSITY OF ILLINOIS
COLLEGE OF MEDICINE
 PEORIA CHICAGO ROCKFORD URBANA



OSF
 HEALTHCARE

Highlighted University of Illinois Resources



The Roy J. Carver Biotechnology Center at U of I

provides a state-of-the-art research infrastructure to investigators. Its portfolio includes core research facilities supporting genomics, proteomics, metabolomics, bioinformatics, flow cytometry and translational medical research. The Peoria community has close ties to U of I and can connect you with the people and programs of interest in this project. Here is the list of faculty working on this project: <https://biotech.illinois.edu/directory>.



The Center for Computational Biotechnology and Genomic Medicine

at University of Illinois has partnered with Mayo Clinic to utilize the power of computational predictive genomics for advancing pressing societal issues such as enabling patient-specific cancer treatment, determining phenotype from a person's or organism's genotype, understanding and modifying microbiomes, and meeting the rapidly expanding need for food. Here is the list of faculty working on this project <https://ccbgm.illinois.edu/people/>. The EDC works closely with the University of Illinois Network and would be happy to help connect you to persons of interest to your project.



Interdisciplinary Health Sciences Institute at U of I

IHSI ignites and accelerates clinical and translational research and innovation through interdisciplinary convergence.

As a campus-wide interdisciplinary research institute, IHSI cuts across the many academic units, programs, and research and technology centers engaged in health sciences research at Illinois. We advance the health sciences ecosystem at Illinois through visioning, partnering, providing administrative and programmatic support, and launching initiatives that ultimately improve the health of our local, national, and global communities. See some of the people involved [here](#).



The **William Keck Center for Comparative and Functional Genomics** conducts research on the comparative genetic organization, evolution and function of plant, animal and microbial genomes and provides sequencing and oligonucleotide synthesis, DNA microarray facilities, and bioinformatics specialists.

Highlighted University of Illinois Resources

“

ILLINOIS ranks

6th

largest STEM
workforce in
the country”.

- istcoalition; 2019 Talent Index

ADDITIONAL CONTEXTUAL INFORMATION

[The Illinois Innovation Index](#) examines the state’s STEM workforce, including careers in science, technology, engineering and math as defined by the National Center for Education Statistics. According to the Innovation Index developed by the Illinois Science and Technology Coalition, Illinois ranks sixth nationally in the number of STEM degrees awarded and has the sixth - largest STEM workforce in the country. STEM employment in the state has seen double digit annual growth over the last five years. During that same period Illinois’ growth in STEM jobs has grown more quickly than at the national level. In 2016 the Greater Peoria Region ranked 13th in the nation according to an analysis of the nation’s 330 largest metro areas conducted by Nerdwallet.

University-Community Partnerships

The University of Illinois System has embarked upon a new purpose-driven interdisciplinary research institute focused on building prosperity and growing the state’s workforce by creating solutions to grand challenges. The Discovery Partnership Institute leverages the collective capacity of its partners to collaborate, innovate and build the economy by educating a 21st century workforce through deep integration with industry partners and a project focused team environment. Identified as key themes for this work include these cross-cutting areas - computing & data, environment & water, food & agriculture.

Peoria has been identified as one of the early partners collaborating in a system of connected university-community-industry based hubs throughout the state that will work together to drive innovation along with economic and workforce development across Illinois. Illinois Innovation Network Hubs will utilize a combination of research, public-private partnerships, entrepreneurship and workforce training programs to spur economic development in their region and across the state. There are a wide variety of private, public and non-profit partners for meaningful engagement in this research area and follow on efforts.

And many more - These are a mere sampling of the downstate people and programs of relevance to your project. Chicago and St. Louis are 3 short hours away and provide an ever expanding network of resources and collaborators on which to draw. Here’s an overview of Illinois’ [Life Sciences industry](#) information for further exploration.

Highlighted BioMedical Manufacturing Businesses in 5 county region

Charles River Labs

Charles River Labs (CRL) is passionate about their role in improving the quality of people's lives. Their mission, excellent science and strong sense of purpose guides everything they do, and they approach each day with the knowledge that our work helps to improve the health and well-being of many across the globe. CRL partner with the biopharmaceutical industry, academia and government agencies around the globe accelerate research and drug development efforts. Over the last three years, they worked on over 80% of the drugs approved by the FDA. They have six offices in Illinois, including one in Roanoke. In 2020, Charles River donated nearly \$30,000 to community organizations in Illinois, including to Roanoke Food Pantry; Heartline and Heart House, an emergency shelter for women and children; and ADDWC, whose mission is to improve the quality of life for people with developmental disabilities and their families of Woodford County and the surrounding areas.

Corbion BioTech

Corbion is a European based global market leader in lactic acid and its derivatives, and a leading supplier of emulsifiers, functional enzyme blends, minerals, vitamins and algae ingredients. Corbion uses their expertise in fermentation and other processes to deliver sustainable solutions for the preservation of food and food production, and health. Corbion is based and has a world-wide presence with a manufacturing site in Peoria, Illinois and has a market cap of approximately \$3 billion.

Lonza LLC

Lonza is the largest Pharmaceutical Contract Manufacturing Organization in the world comprised of two business segments: Lonza Pharma, Biotech & Nutrition which focuses on delivery of innovative solutions to prevent, treat or even cure disease: and Lonza Specialty Ingredients which focuses on microbial for the protection of homes, schools, workplaces and environment from mold and other potential pathogens. Custom development and manufacturing of specialty chemicals and composites to support the electronics, aerospace, food and agrochemical industries are also offered. Lonza has a world-wide presence with a large production facility in Mapleton, Illinois. The company has a market cap exceeding \$40 billion.

Reditus Labs

Reditus Labs is a full-service dermatopathology laboratory located in Pekin, Illinois. The company provides client physicians with top-tier, accurate anatomical and clinical pathology services, as well as microbiology testing and PCR assays. Reditus Labs was recently in the news after identifying several Covid-19 variants from Illinois patients.

zuChem, Inc

zuChem develops proprietary bioprocesses for the manufacture of carbohydrates for the sweetener industry. zuChem's proprietary fermentation process for the production of xylitol is now being rapidly deployed globally. This process offers a natural production alternative to the current chemical hydrogenation technology that solves the raw material supply, cost, availability and quality constraints that have plagued the production of xylitol for over a decade. Their first partnership with a Chinese manufacturing partner has led to the construction of a state-of-the art xylitol production facility. Now completed, xylitol is being offered for sale through our Sweet Appeal™ Joint Venture.

“

**Healing is a matter of time,
but it is sometimes also a
matter of opportunity.”**

- Hippocrates

Bump Boxes

Bump Boxes is a fast growing Peoria-based company that provides everything a new mom needs from conception through baby's third birthday. The company started with a subscription box offering and has added additional lines of business including corporate wellness (with hundreds of well-known customers) and durable medical equipment (including breast pumps, blood pressure monitors, compression garments and more).

Dental Arts Laboratories

Dental Arts Laboratories has been in business for more than 85 years providing high-performance restorations. All restorations are fabricated entirely in their U.S. Laboratories utilizing FDA registered materials.

Holland Laboratories

Holland Laboratories is the professional Division of HSC Inc. and has manufactured high grade dental medicines since 1909. Their product line called TAXI offers Tooth and Denture cleaning, liquid stain detergents for the dental and Veterinarian professions.

Linical Americas (AKA Linical Accelovance)

Linical is a public, mid-sized Contract Research Organization (CRO) headquartered in Japan with a significant presence across North America, Europe, and Asia-Pacific. Linical provides the full spectrum of drug development services from early stage to large-scale, multinational studies. Areas focus include Phase I-IV studies in oncology, infectious disease, and CNS.

Magnified Vision, Inc.

Magnified Vision, Inc. offers and supports one of the largest selections of video magnifiers in Illinois and is known for its excellent service and customer care. Andreas Heim, owner and president of Magnified Vision, Inc., has a M.A. in Special Education with a focus on Low Vision and Blindness and is a certified Orientation & Mobility Instructor.

Midwest Bioprocessing Center

Formed in 2019 as a spinoff of zuChem, The Midwest Bioprocessing Center specializes in using bioprocess technologies to bring new products to market for human health and nutrition. The Company combines proprietary molecular biology, biocatalysis and fermentation technologies to produce important new industrial compounds and pharmaceutical intermediates. MBC offers a growing catalog of products for sale and carries out custom synthesis for customers in pharmaceutical, personal care, and nutritional industries. Of note is the company's unique ability to produce rare sugars and carbohydrates containing molecules for the development of new pharmaceuticals.

Numotion

Numotion is the nation's largest and leading provider of products and services that provide mobility, health and personal independence and has a site in East Peoria. They focus on Complex Rehab Technology (CRT), urological supplies, home accessibility, accessible vehicles and other assistive technology.

Pal Health Technologies Inc.

Pal Health Technologies is located in Pekin, Illinois, United States and is part of the Medical Equipment & Supplies Manufacturing Industry. Pal Health Technologies, Inc has 100 total employees across all of its locations and generates over \$15 million in sales.

Rheo Engineering

Rheo Engineering is a leading industry resource in customized engineering controls relating to GMP material handling, containment, and process technology systems. Rheo excels at providing successful solutions to complex material handling process challenges. Headquartered in Peoria, IL USA, Rheo serves a global client base; working with over 600 companies, including the largest 15 pharma/biopharma companies. Rheo has installations in pharma and biopharma manufacturing suites, working closely with clients in designing specific solutions. A great work environment has allowed Rheo to hire and retain employees while doubling production every two years.

Greater Peoria Sites to Consider

The GP region offers a range of development options, a sampling of which is highlighted here. You will find a historic warehouse property for redevelopment, an empty plot of land for new construction and a facility that could be easily and quickly repurposed for lab space. This is a highlighted list of options in the community. Please visit: <https://data.greaterpeoria.us> for more available options.

Greater Peoria
DATAHUB



New Construction Opportunity in Downtown Peoria

- Address: 1001 SW Jefferson, Peoria, Illinois
- See Appendix pg 38 for a 25,000 sf Lab Space Building designed for this space.
- Pin Number: 1809308044
- Lot size: 1.82 acres
- All Utilities to the site
- Price: Negotiable with owner
- **Local Incentives for this property include:**
 - Federal Opportunity Zone
 - Foreign Trade Zone
 - HUB Zone
 - Peoria Urban Enterprise Zone
 - Peoria County GAP loan
 - TRVDA Industrial Revenue Bond
 - Additional state incentives available.



Quick Access to Market - Redevelopment Opportunity

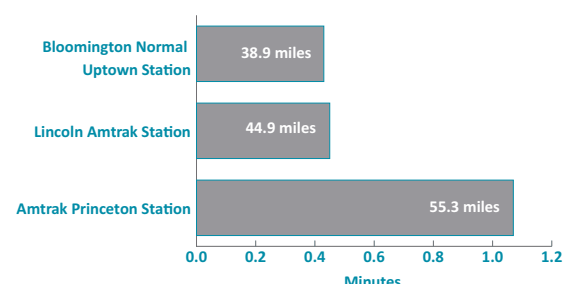
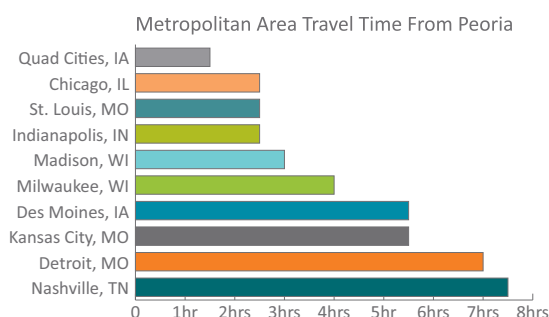
- Address: 7921 N Hale, Peoria, Illinois
- Pin Number: 1405451016
- Lot size: 4.6 acres of land
- 51,600 sf metal warehouse building
- 30' ceilings
- High Cube Warehouse & Distribution Building
- \$48.45/sf lease; \$2,500,000 purchase price
- Additional Locations: <https://www.loopnet.com/Listing/7921-N-Hale-Ave-Peoria-IL/22175763/>
- **Incentives Available:**
 - Peoria Urban Enterprise Zone
 - Peoria County GAP loan
 - TRVDA Industrial Revenue Bond
 - Additional state incentives available.

Airport Access & Connectivity

The Greater Peoria Airport is serviced by American, United and Allegiant Airlines and provides 12 direct flight destinations to area residents. The region is also serviced by an Amtrak station in Bloomington/Normal and a great central location for reaching the world from the heart of Illinois.



Peoria is located along Interstate 74 and travel time is just a few hours from several metropolitan areas:

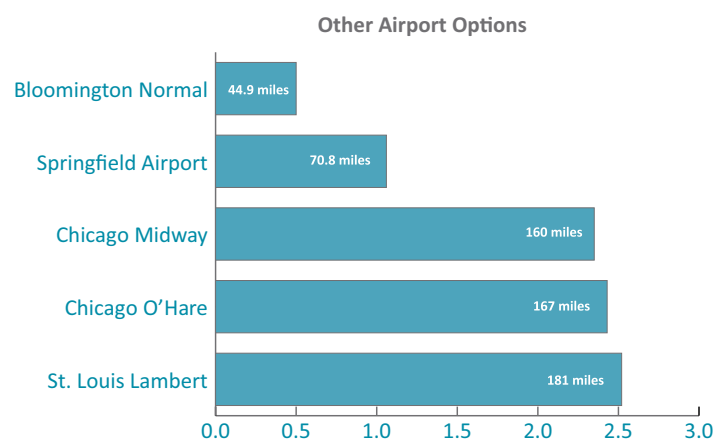


You can travel to 12 direct flight destinations from General Wayne A. Downing Airport (PIA) and reach more than half the globe in a 2 legged flight. Plus the parking is free and the lines through the airport move quickly. You won't believe how easy air travel is from Peoria.

From PIA

- American Airlines takes you to Chicago, Dallas & Charlotte
- United Airlines takes you to Chicago
- Allegiant Air takes you to - Las Vegas, Mesa, Orlando, Punta Gorda, Destin, St. Petersburg, Nashville and Denver

Flying from Peoria is often the cheapest and easiest way to travel in and out of the community, but if other options are preferred, you can get to the following airports in no time at all.



By Private Plane, many business travelers will utilize our world class private airports including Mount Hawley, the Pekin Municipal Airport and more. There are several popular options for private travel and we would be happy to connect you with those options as well.

Cost of Doing Business

Electricity Rates - With an average industrial electrical rate of \$.0569, Ameren Illinois Electric is 19% lower than the national average - (2019)

Gas rates - Average monthly gas bill for Industrial customers is \$36,034 per 100,000 therms which is 45% lower than the average gas rates across the country.

Water - the region sits on top of the Mohammed Aquifer and along the Illinois River providing abundant water resources to local employers. Water services are typically provided by Illinois American Water, the municipalities, or well service.

Sewer - Peoria sewer services are provided by the Greater Peoria Sanitation District whose mission is to facilitate the environmental and economic prosperity of Greater Peoria through the wastewater utility. The GPSD currently serves approximately 140,000 customers across an area of over 66 square land miles and 716 miles of sewer.

Fiber Service - i3 Broadband and Comcast are the largest fiber service providers in the region and both can meet any industrial service levels needed. You can use this [link](#) to identify the fiber service to addresses throughout our community.

Personal Property Tax Exemption - Illinois does not collect a state tax on personal property. All property other than real estate is exempt from the property tax in Illinois. Thus, all classes of personal property, including machinery, equipment, inventories and intangibles, are exempt.

Land Costs

Market	Vacancy Rate	Availability Rate	Market Rent/SF	Inventory SF
Peoria, IL	4.9%	8.6%	\$15.91	11,828,983
Rockford, IL	12.0%	15.3%	\$16.00	7,927,786
Davenport, IA	2.5%	4.3%	\$16.65	10,965,005
Kankakee, IL	15.9%	19.0%	\$17.00	1,888,566
Cape Girardeau, IL	2.7%	6.2%	\$17.42	1,485,540
Champaign-Urbana, IL	9.4%	10.1%	\$19.54	5,316,342
Saint Louis, MO	8.2%	11.9%	\$20.92	144,950,878
Chicago, IL	14.0%	18.6%	\$29.20	502,898,993
National Index	12.1%	16.0%	\$34.20	8,146,433,513

*Data pulled April 2021



Regional Quality of Life Comparison



Region	Cost of Living Index	Median Commute Time	Median Household Income	Industrial Electric per year kwh	Median Home Price	Innovation Index	Human Capital and Knowledge Creation Index	Bachelor's Degree or Higher	Associate's Degree or Higher	High School Diploma or higher
Greater Peoria	88.6	22.2	\$57,282	4.72	\$130,000	111.7	129.9	28.38	61.75	91.72
Chicago	98.7	32.2	\$83,659	5.47	\$253,000	113.6	128.9	36.65	63.69	87.93
Indianapolis	91.7	25.4	\$59,566	8.5	\$172,000	112.7	108.4	33.13	61.03	89.27
USA	100	27.1	\$60,293	6.88	\$252,000	100	100	31.53	60.53	87.66
Boston	148.8	32.2	\$85,559	15.1	\$500,000	130.1	150.4	47.22	69.06	91.44

A few additional resources of interest to your workforce include:

Local Association of Realtors—The monthly reports published by the local association of realtors shows house prices and sales numbers. You can find those reports here - <https://www.309mls.com/Housing-Statistic>. [NerdWallet](#) offers a cost of living calculator where you can see how much money you could live on in other parts of the country. Using it to compare us to Chicago, GP's housing costs are 51% cheaper than Chicago and the cost of living is 24% less in Greater Peoria than it is in Chicago in 2021.

The 309 MLS is the local homelisting resource. Angieslistings on tiktok is another fun way to learn what's available!



\$64,900
 3919 N Vincent Ave.
 Peoria Heights, IL 61616
 2 Bed 1 Bath
 748 Sqft 7841 Sqft lot



\$139,900
 5126 N. Montclair Ave.
 Peoria Heights, IL 61616
 3 Bed 2 Bath
 1796 Sqft 7800 Sqft lot



\$319,000
 2705 W Arden Way.
 Dunlap, IL 61625
 4 Bed 2.5 Bath
 2333 Sqft



\$625,000
 5901 N Sheridan Rd.
 Peoria, IL 61616
 4 Bed 5.5 Bath
 5863 Total Sqft 2224 BSMT Sqft

Cultural Compatibilities

Diversity in Peoria

Like communities across the country, the Peoria region has a history of race and wealth disparities, and in true GP spirit, we are facing them head on to own and address these challenges. There is and will always be more work to do. People and businesses are key stakeholders in our collective efforts to become a more inclusive, welcoming and supportive community to people from every walk of life. A few initiatives informing this process include:

- **City of Peoria's [Joint Commission on Racial Justice and Equity](#)** The City of Peoria's coalition is identifying recommendations to improve areas of racial justice and equity within our community, to both identify some quick wins and establish a structure that could transition into a collective impact model that will engage the community and address issues for racial justice and equity.
- **Cultural Celebrations in Greater Peoria** - the region has attracted people from all over the world and our cultural celebrations are a great introduction to that reality. Here is a highlighted list of community favorites:
 - Ittoo Celerations
 - Oktoberfest Celebrations
 - Peoria Irish Fest
 - Lindenhof & German American Society
 - Visit [Discover Peoria](#) to learn more.
- **Highlighted Sister City Relationships**
 - Friedrichshafen, Germany
 - Benxi, China
 - Clonmel, Ireland
 - Aitou, Lebanon
- **[Black Owned Peoria](#)** is a resource compiled by Discover Peoria to celebrate African American Business owners in the area.
- **100+ International companies** - that are foreign owned and/or do business internationally include Caterpillar, Komatsu, 4B Components and others also contribute to the robust international community in the area. With a large presence of people from around the world and/or people who have lived all over the world, the Peoria community has a sophisticated population with strong intercultural ties and there are many ways to plug in and connect with the world right here in Greater Peoria.

Dining in Greater Peoria

With more than 6 farm to table restaurants and a host of popular independent restaurants, coffee shops, ice cream shacks and more—the food scene in Greater Peoria is booming and getting better all the time.



Cultural Compatibilities

Sustainability

Sustainability is another area in which the region has incredible strengths. Between [Natural Fiber Welding's](#) (NFW) mission to remove petroleum from the textile industry to [Rivian](#), the electronic sport and utility vehicle manufacturer a mere 40 miles away the region is leading the way in disruptive technologies that will help save our planet. These efforts are complemented by existing companies like Caterpillar and Komatsu, both exploring more earth friendly solutions as well as Ameren who has committed to reach a net-zero **carbon emissions goal** by 2050. In addition to these industry giants, we have several local green initiatives that are leading the sustainability conversation. We have Better Earth Composting Services offering an earth friendly trash alternative, and companies like Pekin Insurance that have made public commitments to reduce environmental impact and waste. These private efforts alongside the plant science research at the USDA Ag lab make sustainability a burgeoning cluster that will continue to grow and make a world impact from here in Peoria.



Innovation, R&D, Startups

As mentioned earlier, innovation and resilience are in Peoria's DNA. From the discovery of how to mass produce penicillin in World War II to the meteoric growth of Caterpillar tractor company, NFW a vegan leather alternative made from plant waste - we are a community of makers, tinkers and innovators and we welcome any and all who want to operate in that space. Several of the resources have been previously mentioned, but are highlighted again here for quick perusal.

- [Distillery Labs](#) is the region's premier Innovation Space cultivating creative thinking, strategic collisions, and the businesses of the future.
- [The Nest](#) is a coworking space provided by the EDC to provide a shared work space for traveling professionals, remote workers and company innovators needing a
- [Score Mentors](#)
- [Bradley Next Innovation Center](#)
- Investor Groups
 - [Central Illinois Angels](#)
 - [OSF Ventures](#)

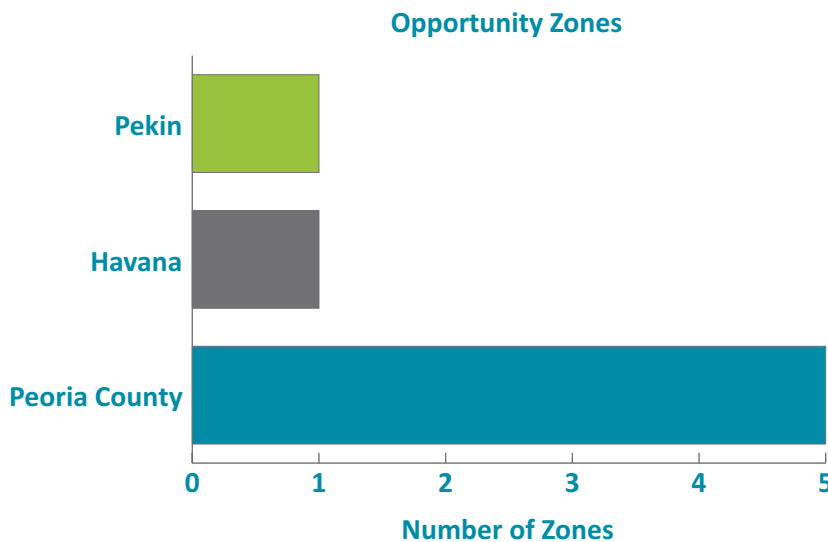
Financial Incentive Overview

Opportunity Zones

There are 7 opportunity zones in the region, 5 in Peoria County, 1 in Havana, & 1 in Pekin. Sections of the warehouse district are also considered opportunity zones. An Opportunity Zone is an economically-distressed community where new investments, under certain conditions, may be eligible for preferential tax treatment. See a map of our areas of opportunity [here](#).

INCENTIVES

- [Peoria County Government Assistance Programs](#) | [TRVDA Industrial Revenue Bonds](#) | [Community Development Block Grant \(CDBG\)](#) | [Foreign Trade Zone](#) | [Research & Development Tax Credit](#) - pg. 30
- [Advantage Illinois Participation Loan Program](#) | [Illinois Manufacturing Innovation Voucher Program](#) - pg. 31



TIF Districts

There are 21 in the region. The warehouse district has a TIF.

Sales tax revenues and additional property tax revenues generated within the TIF for improvements within the district to encourage new economic development and job creation.

Projects in TIF districts vary, but could include:

- Redevelopment of substandard, obsolete, or vacant buildings.
- Financing public infrastructure improvements, including streets, sewer, water, in declining areas.
- Cleaning up polluted areas.
- Improving the viability of downtown business districts; rehabilitating historic properties.
- Providing infrastructure needed to develop a site for new industrial or commercial use.
- Explore Greater Peoria's 21 TIF Districts on our [interactive map](#). Simply add the layer of the TIF District you want to see.

Financial Incentive Overview

Peoria County Government Assistance Programs

These incentives apply to any applicable project in Peoria County. Through its Government Assistance Program, Peoria County offers 3 levels of assistance through a MICROLOAN (up to \$35K or 80% of project), a GAP LOAN (up to \$150K or 50% of project), or a MACRO LOAN (up to \$600K or 33% of the project). The interest rate of the loans are generally fixed at 3% below the prime rate, with a minimum rate of 3%.

<https://www.peoriacounty.org/356/Government-Assistance-Program>

TRVDA Industrial Revenue Bonds

These incentives apply to any project in Peoria, Tazewell or Woodford Counties. The Tri-County River Valley Development Authority (TRVDA) issues bonds, passing its DOUBLE tax- exempt status on to finance the acquisition of fixed assets including land, buildings, machinery and equipment. The total project costs cannot exceed \$20 million. The interest rate available on these bonds is far lower than conventional financing, and you can expect your interest savings to range from 150 – 300 basis points (1.5% - 3.0%) lower than a conventional loan. For example a \$5.0 mil bond would save over \$1,500,000 in interest over a term of 30 years. Finance up to 100% of the project cost—contingent upon meeting credit standards of a local bank backing the bond.

Community Development Block Grant (CDBG)

The Greater Peoria Economic Development Council works with a client to determine if site improvements and/or project development financing fit the CDBF Economic Development program. In municipalities outside of Pekin and Peoria, local governments may request a maximum of \$1,000,000.00 for gap financing to assist businesses locating or expanding in the community. Funds may be used for machinery and equipment, working capital, building construction and renovation, or improvements to public infrastructure that creates and/or retains jobs in the community.

<https://www2.illinois.gov/dceo/CommunityServices/CommunityInfrastructure/Pages/default.aspx>

Foreign Trade Zone

The Greater Peoria region is in and administers the Foreign Trade Zone 114 providing over two-million square feet of warehousing and distribution space available for general purpose zone usage. Businesses that register for foreign trade zone status will enjoy numerous benefits such as lower duties, cost avoidance, staging and showcasing capabilities, and assembly cost savings. The FTZ provides tremendous savings for businesses that import and export goods from around the world. Sally Hanley at the GPEDC will support your FTZ application.

Research & Development Tax Credit

The R&D tax credit in Illinois is modeled after the federal R&D tax credit, including the federal definition of qualifying research. It is a non-refundable tax credit equal to 6.5% of qualifying research expenditures that exceed the baseline amount.

Qualifying Expenses Include:

- Any federally qualifying R&D expenses that are made in Illinois qualify.
- Qualified research is defined in IRC section 41(d) and 41(e) and includes the sum of the in-house research expenses, contract research expenses and basic research payments paid or incurred by the business.

<https://www.kbkg.com/research-tax-credit/illinois-rd-tax-credit#:~:text=>

Financial Incentive Overview

Advantage Illinois Participation Loan Program

With any PLP loan program, financial institutions identify potential opportunities for state participation:

- Standard Participation Loan Program (PLP) – designed to enable small businesses to obtain medium to long-term financing, in the form of term loans, to help grow and expand their businesses. Department participation is subordinated to the lender and has a “below market” interest rate.
- Minority/Women/Disabled/Veteran-Owned Businesses – similar to Standard PLP; however, the amount of financial support may range depending on loan term, MWDV majority control/ownership.
- Revolving Line of Credit (RLOC PLP) – similar to Standard PLP except in the form of a revolving line of credit. Maximum term is two years and further support requires reapplication.

Funding may be used for many purposes, including but not limited to:

- start-up costs
- working capital
- business procurement
- franchise fees
- equipment
- inventory
- as well as the purchase, construction, renovation, or tenant improvements of an eligible place of business that is not for passive real estate investment purposes.

Here you will find the brightest minds
& the hardest workers growing some
of the worlds most iconic companies.”

- Intersect Illinois

<https://www2.illinois.gov/dceo/SmallBizAssistance/AdvantageIllinois/pages/default.aspx>

Illinois Manufacturing Innovation Voucher Program

The goal of the Illinois Manufacturing Innovation Voucher is to support small and mid-sized manufacturers, with 5-500 employees, to embrace new technologies in their products and processes. The Illinois Manufacturing Innovation Voucher will award up to \$25,000 in match funding to:

- Accelerate technology adoption
- Identify and implement productivity improvements
- Overcome organizational growth barriers

This program is funded by [IMEC](https://www.imec.org/innovation/). For program details & the application, please visit: <https://www.imec.org/innovation/>. Applications are accepted on a rolling basis.

Additional Options

There are a variety of financing and tax credit programs that may apply to your project and may include small micro-lending programs to large-scale Fed/State Historic Tax Credits, New Market Tax Credits, SBA Financing, and others.

Illinois Bonus Savings Personal Property Tax Exemption

Illinois does not collect a state tax on personal property. All property other than real estate is exempt from the property tax in Illinois. Thus, all classes of personal property, including machinery, equipment, inventories and intangibles, are exempt.

State Incentive Partners

- Intersect Illinios
- DCEO



Thank you.

Thanks again for reading. I hope you've enjoyed this intro to the talent and resources from which we'll draw to make your company a success in GP. We can dive deeper into the details as your evaluation continues. I hope this overview will help and keep Peoria on the top of your consideration list. Please keep the questions coming! I look forward to keeping in touch.

With regards,



Lenora Fisher | Director of Business Attraction | [Locate Here](#)

SEE BELOW

Appendix Items

GPEDC Investors in your Success	33
CEO Council Letter of Support	34
Jake Becraft Interview	35
Designed Lab Space - New Construction	38
Designed Lab Space - Redevelopment Opportunity	39
Highlighted BSA LifeStructures Projects	40
Building Projects Timeline	42
Born to Build	43
Highlighted O'Shea Builders Project	44

Greater Peoria Partners Invested in Your Success



Ameren
Bradley University
Central IL Business Publishers

Good Energy
City of East Peoria
City of Washington

Mason County
PNC Bank
Woodford County

Advanced Technology Services
Advanced Medical Transport
Bard Optical
Busey Bank
CGN & Associates, Inc.

Cullinan Properties LTD
Heart Technologies
Heartland Bank & Trust
Illinois Central College

Komatsu
Logan County
Morton Community Bank
River City Construction

American Water Works Co
Comcast
Commerce Bank
CORE Construction
DSMH Consulting
Enercon Engineering
Envision Insurance
Farnsworth Group
Goodwill Industries of Central IL
Hanson Professional
Heart of Illinois United Way
Heartland Bank
Inland Tool

Keith Engineering Design
Morton EDC
Morton Industries
Cast Technologies
G&D Integrated
Metamora Industries
O'Shea Builders
Pearl Technologies
Philippi-Hagenbuch
Quality Metal Products
SMF
TRIGO - SCS
TWM

City of Chillicothe
City of Delavan
City of El Paso
City of Elmwood
City of Eureka
City of Havana
City of Lincoln
City of West Peoria
Village of Germantown Hills
Village of Metamora
Village of Peoria Heights
Village of Roanoke



Mission: To utilize the collective regional business leadership to promote a common vision and

Dear Project Lead:

Why Choose Greater Peoria?

Thank you for considering the Greater Peoria region for your business location. We write on behalf of the CEO Council to vouch for the strengths of the region and express our commitment to supporting your talent and business growth long into the future.

The Greater Peoria Region is a centrally located mid-sized hub with big city amenities and strong, inclusive Midwestern values and work ethic. The Greater Peoria Region is large enough to provide a readily available, trainable and sustainable workforce, access to all modes of transportation, and an innovative and ever-growing healthcare system.

Additionally, The Greater Peoria Region boasts the highest quality education at every level from STEM based programs beginning as early as elementary school, a remarkable public school district, community college, a nationally recognized major university and a four year medical school.

Yet, The Greater Peoria's Region true value lies in the affordable cost of living, significantly shortened commute times, and a multitude of service organizations that reflect the philanthropic nature of the region and allow each and every person to make a difference. Because of its diverse and collaborative nature, The Greater Peoria Region is certainly a place that everyone can call home.

Therefore, we, the members of the CEO Council commit to helping you grow your business in The Greater Peoria Region. Our efforts in partnership with our elected officials, the GPEDC, the Peoria Convention and Visitors Bureau, and other important stakeholders will ensure your company's success when you locate here.

Thank you again for considering Greater Peoria. Please do not hesitate to be in touch with any questions.

Sincerely

Jake Becraft



Jake Becraft is the founder of Peoria Bio-Made and the Co-Founder & CEO of Strand Therapeutics.

Q&A: Becraft, EDC Hope To Develop Peoria Into Biomanufacturing Hub

WCBU | By Joe Deacon

Published May 20, 2021 at 7:09 AM CDT | [Read Here](#)

A group of Peoria-area community and business leaders hope to develop the city into a major biomanufacturing center in the next several years.

Lenora Fisher, director of business attraction for the Greater Peoria Economic Development Council, said the Peoria Bio-Made Initiative wants to highlight the city's assets for the growing medical advancement industry.

"We have a very highly educated workforce and talent pipeline: through Bradley, through the medical school, through Jump Simulation, and with some of the doctors who are researchers," said Fisher. "We have like 250-plus either Ph.D. or M.D. researchers in the biomedical field already here."

One of the leaders of the Peoria Bio-Made Initiative is Jake Becraft, a Metamora High School graduate who is co-founder and CEO of Strand Therapeutics, a Massachusetts-based biomanufacturing start-up.

Last week, Becraft and the EDC coordinated a virtual meet-and-greet to connect stakeholders and share their vision for growing the biomanufacturing industry in Peoria.

"We started working together to evaluate opportunities, and what we kind of discovered was that we have all the pieces, but it's kind of still a start-up in the sense that we kind of need to bring it all together and really recognize it and make a kind of coherent push," said Fisher.

Becraft recently spoke with WCBU reporter Joe Deacon about the Peoria Bio-Made Initiative and what it hopes to accomplish.

Joe Deacon: First, can you tell me about Strand Therapeutics? What does your company do?

Jake Becraft: So Strand Therapeutics is a company that merged off of work that myself and some co-workers were doing at MIT, that was focused on messenger RNA technology. So messenger RNA is the same sort of technology that underlies the COVID vaccines, and it has a lot of advantages in the speed and efficiency at which you can bring medicines forward — why it won the COVID vaccine race. We use the same sort of technologies, but aim it at treating diseases like cancer and also rare diseases.

Deacon: Can you give a little bit more of a layman's explanation of what messenger RNA is?

Becraft: Absolutely. So in your body, most people know from high school that your genes are contained in your DNA, which are inside the nucleus of the cell. And what genes do is they essentially encode proteins, and the proteins are what your body is made out of: it makes up collagen, to every single thing that you think about is being "quote-unquote," you.

But the way that the genes actually are transmitted from the nucleus of the cell into the outside of the cell, where they actually become proteins and kind of go about what we call "life," is through what's really called a message, and that's messenger RNA, or mRNA. And so your body uses that technology to send signals for the cells to make these different sorts of genes and proteins.

What we can do is we can utilize that same message to actually deliver all sorts of different proteins that can fix things like genetic diseases, or it can teach your body how to fight a virus. It can really do a whole number of things.

Deacon: So you were in Peoria last week for the Peoria Bio-Made Initiative meet-and-greet. Can you tell me what this Peoria biomed initiative is and what it hopes to do?

Becraft: Absolutely. So I think messenger RNA, and how fast it has become a piece of our national and really international conversation, is really just a preview of what's going on in the biotech ecosystem. Biotech has been really exploding with new and revolutionary technologies for the past 10-20 years.

So, Peoria Bio-Made was really something that emerged out of conversations I was having with former Mayor Jim Ardis, as well as the (Greater) Peoria Economic Development Council, about: what are the new inflecting technologies that are on the horizon that Peoria — you know, when it comes to technology maybe Peoria has to fight with Silicon Valley for prominence — what are new areas of technology where Peoria could really make investments and hopefully create new economic opportunities?

And so biotech — and the next generation of biotech: mRNA, and all sorts of new gene and cell therapy technologies — while it is really expanding and exploding into the market, it doesn't have huge areas or entire economies that have built up around manufacturing, for instance. So a lot of research and development is done in Cambridge, Mass., actually where my research and development company is located. But a lot of the manufacturing is done kind of ad hoc across the nation.

So the value proposition to me was: What can we do today to better position Peoria to play a part in this global sort of opportunity to expand the economy by building new biomanufacturing infrastructure?

Deacon: What makes the Peoria area such a good place for this type of initiative?

Becraft: So first of all, I think a lot of people when you grow up in Peoria, you hear the story of penicillin manufacturing being perfected at the USDA ag lab, and the sort of benefits that breakthrough had — for first, our fight against the Nazis and broader conquering World War II, and then conquering bacterial infections in the later 20th century. And so starting with sort of that nucleus of biomanufacturing innovation, combined with the past 70 years of advanced manufacturing that's been pioneered by Caterpillar, really puts Peoria in this next generation manufacturing capability with a history of biotech manufacturing innovation.

That combined with the fact that Peoria's economy is incredibly well-educated while also having an incredibly low cost of living compared to the rest of the country, that economic opportunity and the margin at which companies can operate makes it very attractive for biomanufacturing, which needs large amounts of land, large amounts of big manufacturing lab spaces, while also requiring a very educated workforce.

And so that intersection only happens in a few areas in the entire country, where you have such educated folks combined with a lower cost of living. That, I think, just in and of itself presents an opportunity for Peoria to really take advantage.

Now, then further combined with the sort of medical excellence that Peoria pioneers from our great hospital systems to the presence of the University of Illinois College of Medicine and Peoria, those sorts of opportunities just, I mean, they scream this opportunity in my face to say that Peoria could be a site of excellence of the world of manufacturing these next-generation technologies.

Deacon: What kind of information were you able to share or were you able to receive during this meet-and-greet event a week ago?

Becraft: What my major focus with Peoria Bio-Made has been to date is really just getting the word out, right? So, to help people understand what "Peoria Bio-Made" means; a lot of people have heard about it, they've seen me on different sorts of media outlets across Peoria, talking about the opportunity and what we can build if we unite together. I think it was a chance to bring the community of interested persons together, to kind of present to them: "This is what we're working on, these are our initiatives," and those initiatives have always been three-fold.

It is: Work with local, state, and federal leaders to create incentivization programs and access opportunities for economic development, and incentivize companies to come to the region through different sorts of policy metrics. It's educational: to prep a workforce, working in partnership with groups like Bradley University to build the workforce that will be needed to sustain these biomanufacturing jobs that we hope to bring. And third, and finally — and arguably most importantly — it's liaison and reaching out to these biomanufacturing companies, and also working to maybe even create our own companies in the central Illinois region that can take advantage of these economic opportunities, and then build further economic opportunities for the people of Peoria and just create more economic diversity in the region.

Deacon: What would you say are some of the short-term or long-term goals of the bio-made initiative, then? Do you have a timetable at all?

Becraft: So, I think in the next three years, we want to be at the point where we have created a centralized database of economic opportunities, incentivization schemes, federal grants and state grants that are available to companies to use, to reach out to them and help companies to access them.

I think in three years, we'll also have wanted to successfully recruited at least one, or one to three biomanufacturers. In the very near term, in the next year, for instance, we want to be initiating some economic development opportunities to actually develop properties, specifically targeting the Warehouse District as an opportunity to build these buildings and get the construction underway that makes these buildings kind of ready to have labs built into them, and really lower the barrier of entry for other sorts of manufacturers to come in and be able to kind of slot their program immediately right into the area.

Then, continue to build that ecosystem over the next 5-10 years. We'll hope to have a multitude of companies, a multitude of opportunities, an entire ecosystem of biomanufacturing that exists in the region. I mean, my true dream is that the Warehouse District just becomes incredibly filled with, you know, the inside of the buildings are these next-generation lab facilities that are cranking out therapeutics for use across the world. And that level of employment that offers, really helps to revitalize that district as well, and revitalize downtown Peoria in general with tons of high-paying, good science, technology, engineering, and mathematics (STEM) jobs.

Deacon: Do you envision Strand having a presence in Peoria?

Becraft: We're at such an early stage that I hesitate to make any sorts of promises, but I mean, absolutely I would. I think the most perfect end to the story is that Peoria Bio-Made, you know, through just my passion to see Peoria develop as an economy and my want to see good happen in the region, and then through Peoria Bio-Made, we create the infrastructure that in five years when my company is looking for building out a manufacturing site, that that ecosystem is already up and running and a start-up like Strand can actually take advantage of that and participate in the community, because I truly believe that there is an incredible amount of opportunity there.

Deacon: Coming from the east coast, what draws you to central Illinois?

Becraft: So I actually grew up in Metamora, Germantown Hills more specifically. I went to Metamora High School, graduated there in 2009, and then went down the street to the University of Illinois and got my bachelor's degree in chemical engineering before making the jump out here to Boston a little short of 10 years ago. So when I came out here to do my Ph.D. in 2013, I always maintained a connection there. My family, I still have lots of family that are around the region: My grandmother and my mother both still live in the area, as well as other family members. It's a place where I've always seen potential.

I think people like Kim Blickenstaff actually helped encourage me. Kim and I are both biotech CEOs, obviously at different points in our careers. Kim's had many decades of experience, and the ability to really amass sort of a capital behind him. I think where I'm coming from it is: seeing that, seeing what he did and being inspired by it, I kind of just thought like, "Well, you know, why wait?"

I think that now's a great time, and with what Kim and his development community and other leaders in the area have been doing, it's a great time to build up an economic opportunity at the exact same time. So I really just want to be a part of that, and I want to be a part of shaping the future of what Peoria can be.

Deacon: From an entire economic standpoint, you see a lot of potential in the Peoria market, then?

Becraft: Absolutely. I mean, with what has happened with COVID, and how we have seen workforce development and the increasing opportunity for remote work and work from home ... Plenty of people love living in cities, in large cities. But that's not everyone, and it shouldn't be that all of the technology and economic opportunities are only located in those cities.

With things like work-from-home, you can live in a place where you can buy a gorgeous, beautiful house for, you know, a third of the cost of a tiny condo in Boston or New York, and still access the same job with the same salary and really the same sort of working potential. I think things like that, and the investment that people like Kim are putting into the region, really open up Peoria's economic future.

And I think all it's going to take is for a number of people that that want to actually see it succeed to bring forward new ideas for the region, and those ideas can be enacted by the incredibly talented workforce on the ground. I think that's part of what inspired me about what Kim is doing with real estate development is, he's bringing ideas that he's seen from a lifetime of traveling the globe and living in California, and he's bringing those ideas back, because I think in Peoria, there's just an incredible thirst for new ideas.

So what I'm hoping that Peoria Bio-Made is, is just another one of those new ideas. We won't be the thing that transforms the entire city, but I do hope that we're a cornerstone of that new economy that takes hold in Peoria.

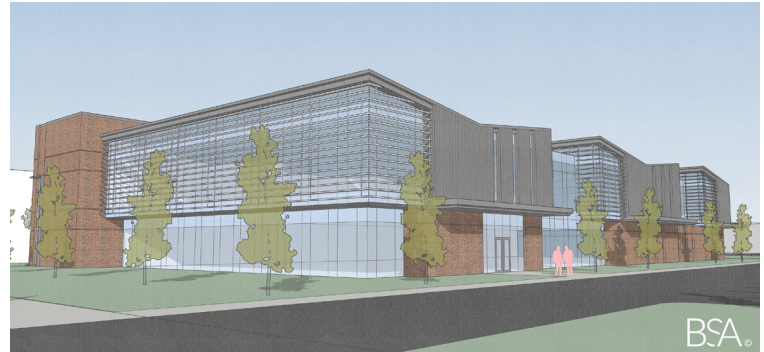
Designed Lab Space - New Construction

Special thanks to **BSA LifeStructures** and **O'Shea** builders for these renderings of a 25,000 sf modular lab space building designed for the greenspace available in downtown Peoria.

“

We are empowering, creative and collaborative;
we help people create a better life at work.”

- Stephanie Peavler, Senior Project Accountant

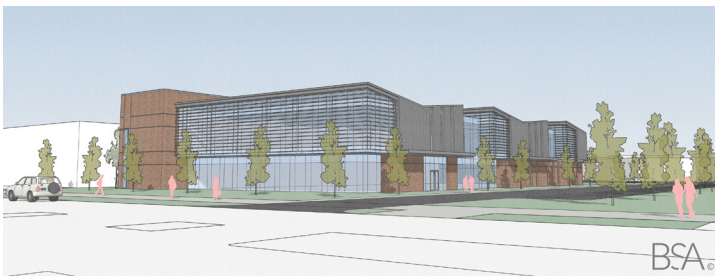


Address: 1001 SW Jefferson, Peoria, IL

BSA LifeStructures designs facilities that support, enhance and inspire healing, learning and discovery. Facilities that are LifeStructures.

Their integrated disciplinary efforts with visionary healthcare, higher education and research clients achieve measurable outcomes through metrics-driven design solutions. Together, BSA creates inspired solutions that improve lives.

SE Eye Level



South Sites to Consider



NE Aerial View

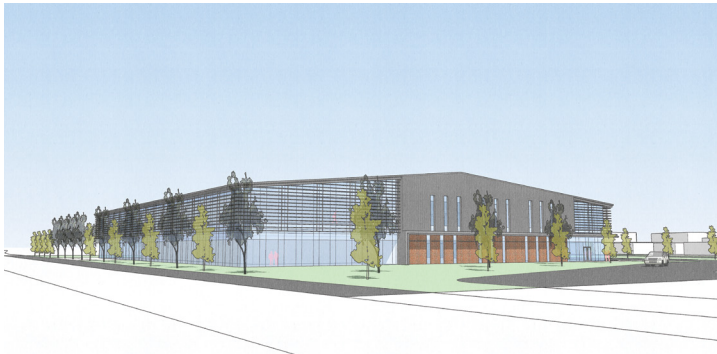


SW Aerial View



BSA

Designed Lab Space Redevelopment Opportunity



Address: 7921 N Hale Ave., Peoria, IL



Focused on what improves lives and the market that our clients live in, so we call it **healing, learning and discovery.**

- Kevin Token, Chairman

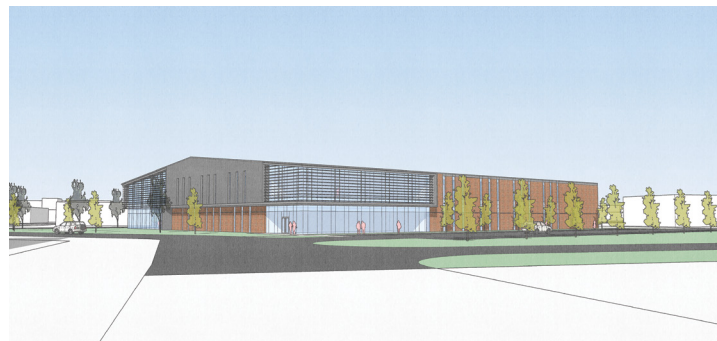
BSA LifeStructures pursues a collaborative process that relies on user and community input to create facilities that support and enhance the important work being done within them. With the firm's multidisciplinary staff, BSA creates purposeful and outcome-focused environments where the impact of design is measured in performance gains.

Dedicated to progressive and sustainable design, the firm has designed a number of LEED-certified buildings, as well as facilities planned to accommodate the future growth and evolution of the institutions that use them. BSA LifeStructures has grown for three decades by not simply designing buildings, but by providing inspired solutions that improve lives.

SE Aerial View



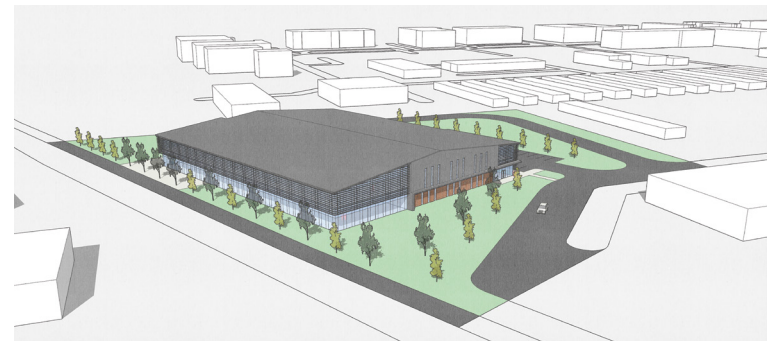
SE Eye Level



North Site



SW Aerial View



BSA

Highlighted BSA LifeStructures Projects

Biomedical Engineering Laboratory Renovation | University of Illinois at Urbana-Champaign

PROJECT STATISTICS

CLIENT

University of Illinois at Urbana-Champaign

LOCATION

Urbana, Illinois

SIZE

136,763 SF

SERVICE PROVIDED

Architecture, Laboratory Planning & Design, MEP Engineering, Interior Design, & Landscape Design

AWARDS

LEED Gold

The historic Everitt Laboratory was transformed into an interdisciplinary hub of research and learning. As the world's first engineering-based college of medicine, the combination of the new Carle College of Medicine and Department of BioEngineering will have space to support all departmental faculty, teaching staff, postdoctoral and graduate students associated with the 20 investigative and computational teams located in the building.

Designed to be the epicenter of the next revolution in biomedical engineering front, the complex features cross-disciplinary work areas clustered according to study and research interests without regard to departmental allegiance. Support spaces to facilitate interaction and collaboration are found throughout the building.

“
We treat every project and every client uniquely.”

– Sam Reed, Chief Strategy Officer



Highlighted BSA LifeStructures Projects

Children's Mercy Research Institute | Children's Mercy Kansas City

PROJECT STATISTICS

CLIENT

Children's Mercy Kansas City

LOCATION

Kansas City, Missouri

SIZE

400,000 SF

SERVICE PROVIDED

Architecture, Lab Planning, Interior Design,
Landscape Architecture

Children's Mercy Research Institute (CMRI) is one of only 31 exclusively pediatrics-focused research facilities in the United States. The nearly 400,000-square-foot, 9-story structure stands as a testament to the importance of translational medicine – research aimed at determining the relevance of pediatric diseases through novel discoveries, bringing that research expeditiously from lab to patient and back again.

"We wanted to move away from the old-style, closed-off research laboratory concept. The new design is focused on collaboration; Ideas will be shared, and discussions will take place between groups throughout the labs and in all of the collaboration spaces."- CMRI Senior Director of Research Development Kieran Pemberton, Ph.D.

The contemporary, all-glass façade of CMRI readily identifies the new research institute from traditional brick-and-mortar design of the existing hospital and surrounding medical centers. The very design of the building – interior and exterior – communicates the forward-thinking nature of the collaborative research that will take place within. The curvature of the building's exterior contributes to the illusion of a DNA helix spire. The full-height monumental staircase connects the entry-level to the top of the building and every floor in between. The building's north and south façade designs each show a literal DNA pattern, a rare mutation.

Our designs provoke those inside the building to do something new, something creative, somethingw greater."

– Chase Miller, Architect



Building Projects Timeline

Provided by O'Shea Builders



Peoria Bio-Made Project Timeline			Duration *	2021												2022												2023											
				Jan	Feb	Mar	Apr	May	Jun	Jul	Aug	Sep	Oct	Nov	Dec	Jan	Feb	Mar	Apr	May	Jun	Jul	Aug	Sep	Oct	Nov	Dec	Jan	Feb	Mar	Apr	May	Jun	Jul	Aug	Sep	Oct	Nov	Dec
Project Organization Phase	Start	Finish	Mos.																																				
Warehouse District adaptive re-use																																							
<div></div> Programming	9/1/2021	10/1/2021	1																																				
<div></div> Schematic Design	10/4/2021	11/1/2021	1																																				
<div></div> Design Development	11/8/2021	12/24/2022	2																																				
<div></div> Construction Documents	1/3/2022	4/1/2022	3																																				
<div></div> Permitting & Regulatory Approvals	3/1/2022	5/2/2022	2																																				
<div></div> Bidding / Negotiations / Contracts	4/4/2022	5/6/2022	1																																				
<div></div> Construction	5/9/2022	11/1/2023	6																																				
<div></div> Punch List	10/3/2023	11/4/2023	1																																				
<div></div> Occupancy	11/7/2023	11/21/2023	0.5																																				
Industrial Park Building remodel																																							
<div></div> Programming	9/1/2021	10/1/2021	1																																				
<div></div> Schematic Design	10/4/2021	11/1/2021	1																																				
<div></div> Design Development	11/8/2021	12/24/2022	2																																				
<div></div> Construction Documents	1/3/2022	4/1/2022	3																																				
<div></div> Permitting & Regulatory Approvals	3/1/2022	4/1/2022	1																																				
<div></div> Bidding / Negotiations / Contracts	4/4/2022	5/6/2022	1																																				
<div></div> Construction	5/9/2022	12/2/2023	7																																				
<div></div> Punch List	11/1/2023	12/2/2023	1																																				
<div></div> Occupancy	12/5/2023	12/16/2023	0.5																																				
New Facility in Warehouse District																																							
<div></div> Programming	9/1/2021	10/1/2021	1																																				
<div></div> Schematic Design	10/4/2021	11/29/2021	2																																				
<div></div> Design Development	12/1/2021	2/25/2022	3																																				
<div></div> Construction Documents	3/1/2022	6/30/2022	4																																				
<div></div> Permitting & Regulatory Approvals	6/1/2022	6/30/2022	1																																				
<div></div> Bidding / Negotiations / Contracts	7/1/2022	8/5/2022	1																																				
<div></div> Construction	8/8/2022	7/31/2023	12																																				
<div></div> Punch List	7/1/2023	7/31/2023	1																																				
<div></div> Occupancy	8/1/2023	8/15/2023	0.5																																				

* Duration periods are approximate and subject to adjustment as the client wishes to explore design options and material alternatives. Spring and summer are ideal construction start dates for new construction.



Born to Build



Founded in 1900, O'Shea Builders is the leading construction-services provider in Illinois with offices in East Peoria, Springfield, Decatur and Champaign. We specialize in healthcare construction and navigating the many complexities that exist in sterile healthcare and laboratory environments. Our mission is to create exceptional construction experiences for our clients through legendary service.



In the last 10 years alone, we have partnered with BSA LifeStructures on more than \$600 million of healthcare projects. Our two firms share a passion for delivering industry-leading design and construction.



Top 400 Contractor
in the Nation 2021

Partial Client List:



Highlighted O'Shea Builders Project

EXPERIENCE



CLIENT PARTNER

Memorial Medical Center
Ed Curtis, President and CEO
228 W. Miller St.
Springfield, IL 62701
217.788.5450
curtis.ed@mhsil.com

ARCHITECT

BSA LifeStructures

DELIVERY METHOD

Construction Management

PROJECT TYPE

New Construction & Renovation
Cost Estimating Services

COST

\$150.0 Million



Memorial Medical Center Expansion Project

O'Shea Builders served as Construction Manager for Memorial Medical Center's Advancing Care by Design project, a historic multi-year endeavor intended to transform the medical center and how it delivers care to the hundreds of thousands of patients it serves each year.

The project included:

- A three-floor patient care tower that houses 114 private patient rooms with enhanced patient safety features and dedicated space for the families and visitors of intermediate-care, cardiology and orthopedic patients.
- Six new operating rooms and expansion for surgical services.
- Renovation of the main entrance and lobby that allows for easier, more convenient and safer patient access to the surgical center and the hospital in general.
- Construction of the Memorial Center for Learning and Innovation, a three-story facility specifically designed for learning, innovation and professional development. The building includes a large conference center and classrooms, a state-of-the-art Clinical Simulation Center, and Surgical Skills Laboratory.
- Upgrades to the campus' Infrastructure.